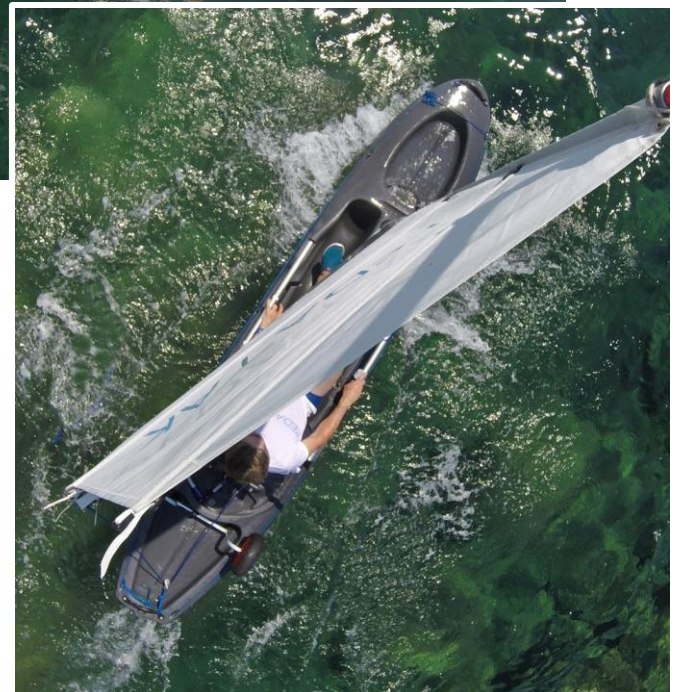


# PEDAYAK ELECTRIC

Model : CLASSIC



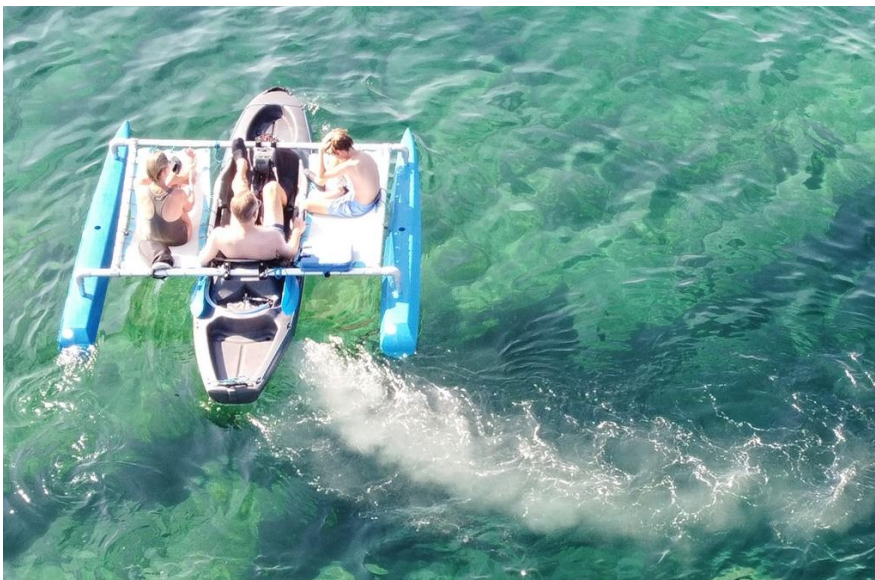
PEDAYAK ELECTRIC CLASSIC is a "hands-free" kayak with hybrid electric and/or muscular drive, manoeuvrable, stable, versatile and modular.

It is a concentrate of technological innovations.

It features:

- A muscular propulsion with pedals and propeller.
- An electric propulsion system, controlled by a removable remote control.
- A steering system with a sliding stick located on the side directing an electric pod.

This combination provides surprising manoeuvrability and agility, forwards or backwards.



## Features

Unsinkable self-emptying hull in roto-moulded polyethylene, "sit on top" type.

Length x width : 360 x 73 cm

Weight : 45 kg

Maximum load: 180 kg

Floatability: 429 dm<sup>3</sup>

Speed : 9 km/h

Power : 300 Watt / 24 Volt

Autonomy (with 15 Ah lithium battery):

With pedaling : Up to 7 hours

Without pedaling : 3 hours at average

speed ; 1,2 hour at maximum speed.



## KEY ADVANTAGES :

- Allows either 100% electric and/or 100% muscular propulsion, or a combination of both.
- Environment friendly : No CO2 emissions, silent, 100% recyclable components.
- The electric propulsion is controlled by a removable waterproof remote control.
- The battery is located inside the waterproof hull or possibly outside. It is recharged at home.
- Can be fitted with solar panels (see **PEDAYAK SOLAR**).
- Steering is provided by an underhand stick which directly controls the electric pod.
- « Hands free » : allows for fishing, walking, sailing, photography, video, telephone, binoculars observation, etc.
- Can beach : the propeller and rudder are protected by two keels, go in very shallow areas (35 cm draught). Reverse by back-peddalling, manoeuvring, agile, turns on the spot.
- Can accommodate an extra passengers, less than 40 kg.
- Stable and unsinkable, good at sea. Quiet. Comfortable with its ergonomic backrest.
- Storage compartments for GPS, bottles and cans, bottle holder, front and rear storage bins.
- Accessible to disabled people.
- Modular: can be equipped with a **SAIL**, can be fitted in **TRIO** (trimaran), **PRAO** or **GRAND PRAO** (one side float), **DUO** (catamaran) versions, with an intermediate removable structure, allowing up to 5 passengers, and a wide range of activities, sunbathing, bringing diving or bivouac equipment, etc.
- More than 10 accessories available for fishing, sailing, raid, tourism.

Removable, waterproof, simple remote control of the engine

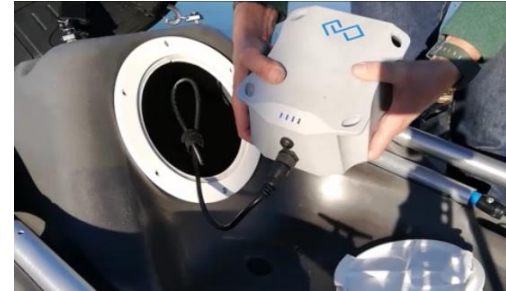


Steering control stick



Keels, propeller and electric pod

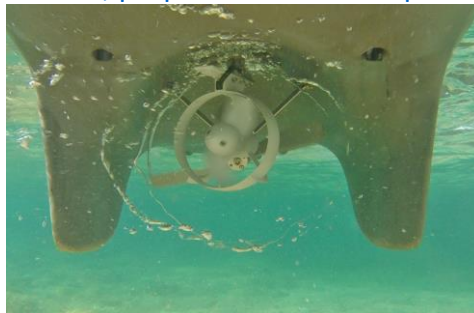
Waterproof battery and controller



Children friendly



PEDAYAK DUO ELECTRIC, catamaran



PEDAYAK PRAO ELECTRIC, a side float



PEDAYAK TRIO ELECTRIC, trimaran



[See the video](#)

**PEDAYAK**  
ELECTRIC

made by

L'Aquaphile, sarl  
[www.aquaphile.fr](http://www.aquaphile.fr)  
[www.pedayak.com](http://www.pedayak.com)

[contact@aquaphile.fr](mailto:contact@aquaphile.fr)  
Tel : +33 953 857 660

L'AQUAPHILE



WATER LOVER & WATER POWER

Made in France 